

## 2018 MIZISE (TURKEY) HARVEST in the WISCONSIN and MINNESOTA 1837 and 1842 CEDED TERRITORIES

### BACKGROUND

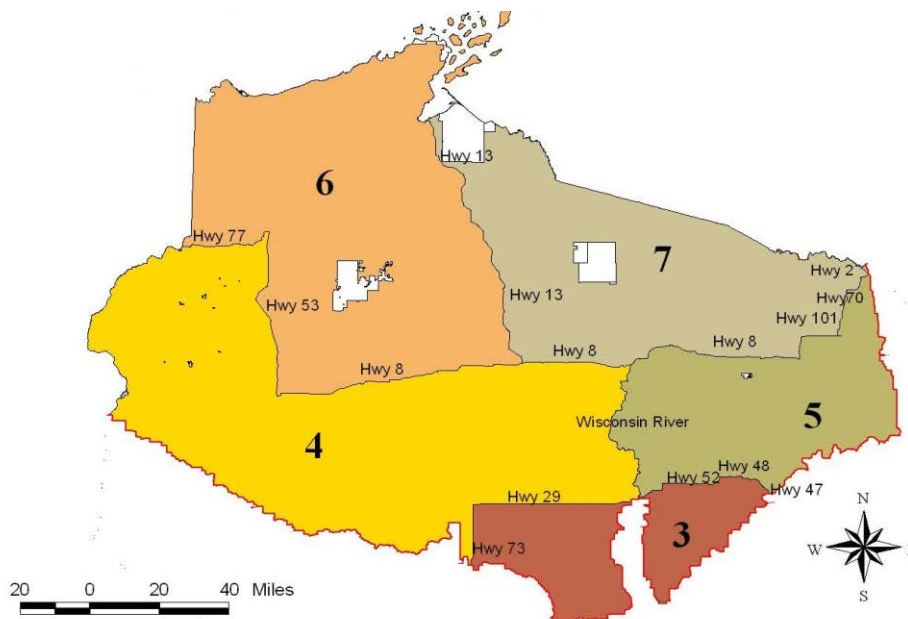
The hunting of mizise (turkeys) in the Wisconsin and Minnesota ceded territories has been a small but regular activity since the reaffirmation of off-reservation harvesting under the *Voigt* and *Mille Lacs* decisions. Once extirpated from the region, turkeys have again become established throughout much of the Wisconsin and Minnesota ceded territories, and all of the Wisconsin and Minnesota ceded territories are now included in turkey management zones. This memo summarizes the 2018 mizise harvest; additional background discussion and harvest information for the 1994-2007 period can be found in David, 2008, and harvest memos done for individual years from 2008-2017.

### WISCONSIN

About 94% of the ceded territory turkey harvest since the re-affirmation of off-reservation treaty rights has taken place in Wisconsin. Since 1994, a total of 529 turkeys have been harvested in the state by tribal members exercising off-reservation, treaty-reserved rights.

#### Regulations

The spring season began the Wednesday nearest April 13, and ran for 42 consecutive days. The fall season ran from the day after Labor Day to December 31. There were 5 mizise management zones within the Wisconsin ceded territory (Figure 1). Carcass tags were not required, but all birds harvested had to be registered by phone or in-person within 3 working days of harvest. The daily bag limit was 3. Complete turkey harvest regulations are included in each tribe's off-reservation model code. (A generic model code can be found under the "Harvest Regulations" tab at [www.glifwc.org](http://www.glifwc.org).)



The boundaries depicted on this map are representations and not intended to be legally binding.

Figure 1. Wisconsin ceded territory mizise management zones for 2018.

## Harvest

A total of 33 birds were registered, including 22 in the spring season and 11 in the fall (Table 1). At least 1 bird was harvested from 4 of the 5 zones in the Wisconsin ceded territory, with most of the harvest (20 birds) coming from zone 6.

Total harvest in 2018 was similar to 2017 (Figure 2). Until 2014, most of the Wisconsin tribal harvest occurred in the fall, but over the last 4 years, 72% of the harvest has occurred during the spring season.

Beginning in the fall of 2018, for each bird harvested in Wisconsin, hunters were asked if they used a 22 caliber rifle to harvest the turkey. No hunter reported using this firearm.

Table 1. Wisconsin off-reservation, ceded territory mizise harvest in 2018.

Season	Sex	Mizise Management Zone					Sex Total	Season Total	Year Total
		3	4	5	6	7			
Spring	Male			3	17	2	22	22	33
	Female								
Fall	Male		1	1	2	1	5	11	
	Female		3		1	1	5		
	Unk.					1	1		
Zone Total			4	4	20	5			

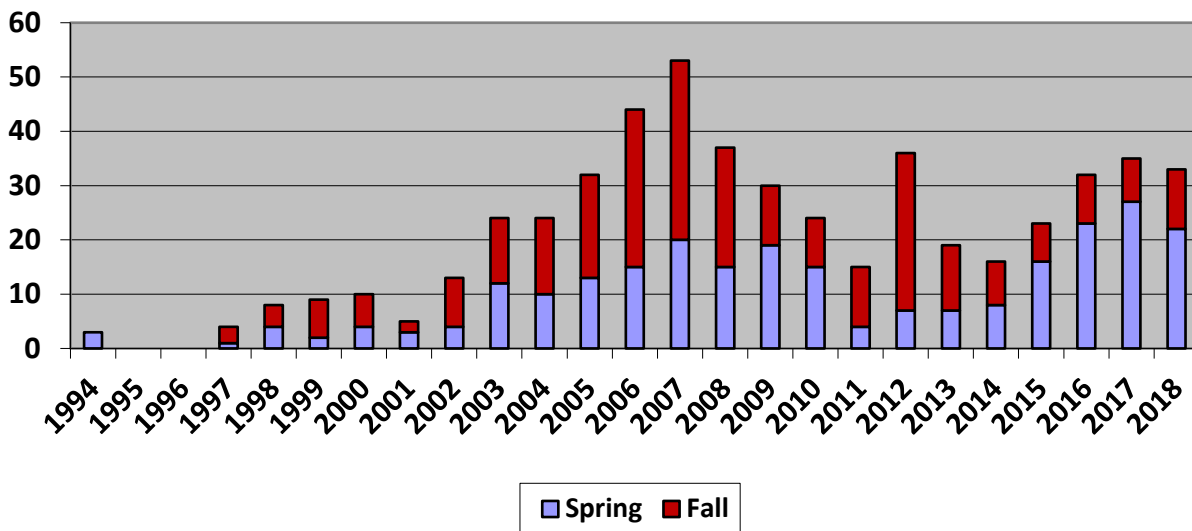


Figure 2. Wisconsin off-reservation, ceded territory mizise harvest, 1994-2018, by season.

## MINNESOTA

### Regulations

Mizise harvest in Minnesota has been very minimal, although all of the 1837 ceded territory was within zones open to turkey hunting with the exception of the Sherburne National Wildlife Refuge (Figure 3). Spring season dates were April 14 - May 31; fall season dates were the day after Labor Day – Dec. 31. Complete turkey harvest regulations are included in each tribe’s off-reservation model code. (A generic model code can be found under the “Harvest Regulations” tab at [www.glifwc.org](http://www.glifwc.org).)

### Harvest

A record 9 birds (1 female and 8 males) were reported harvested from the Minnesota ceded territory in 2018. All were taken in zone 508. Five males were taken during the spring season, and 4 males and 1 female were taken in the fall. The total previous harvest from the MN ceded territory since 1998 consisted of 7 birds taken in 2017, 2 birds taken in 2016, 2 in 2015, 3 in 2014, 1 in 2013, 3 in 2010, 3 in 2008 and 2 in 2007 (or a total of 32 birds through 2018).

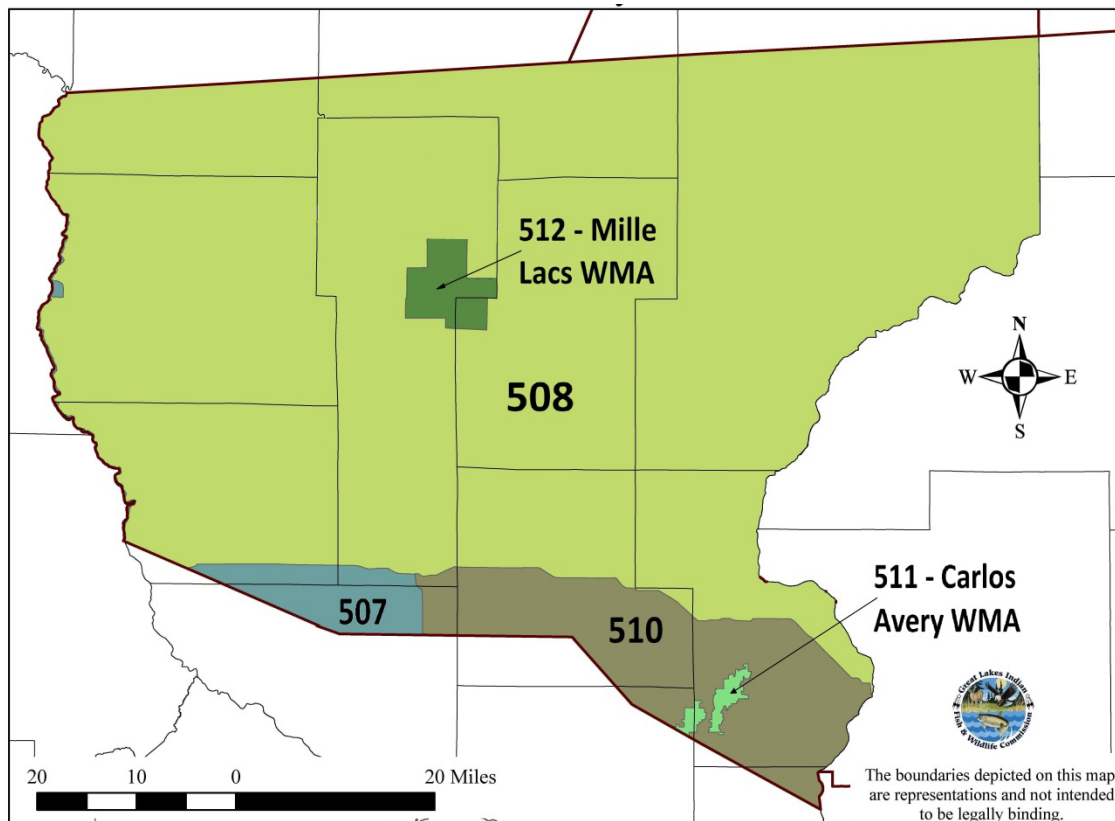


Figure 3. Minnesota 1837 ceded territory mizise zones in 2018.

## LITERATURE CITED

David, P. 2008. Mizise (Turkey) Harvest in the Wisconsin Ceded Territories, 1994-2007. Great Lakes Indian Fish and Wildlife Commission Administrative Report 08-14. 5pp.