



**Results of the 2011 Off-Reservation  
Waawaashkeshi (Deer)  
Omashkooz (Elk)  
and Makwa (Bear)  
Harvest in the  
Ceded Territories of Michigan**

by  
Miles Falck  
Wildlife Biologist

Administrative Report 12-06  
June 2012

Great Lakes Indian Fish & Wildlife Commission  
Biological Services Division  
P.O. Box 9  
Odanah, WI 54861  
(715) 682-6619

## Results of the 2011 Off-Reservation Waawaashkeshi (Deer) Omashkooz (Elk) and Makwa (Bear) Harvest in the Ceded Territories of Michigan

### INTRODUCTION

This report summarizes the 2011 off-reservation harvest of waawaashkeshi (deer), omashkooz (elk) and makwa (bear) in Michigan by GLIFWC-member tribes who retain hunting, fishing and gathering rights on these lands in the treaties of 1836 and 1842 (Fig. 1). Successful tribal hunters included members from the Bad River Band, Bay Mills Indian Community (BMIC), Keweenaw Bay Indian Community (KBIC), Lac Vieux Desert Band (LVD), Red Cliff Band, and the Sokaogon Chippewa Community (Fig. 1).

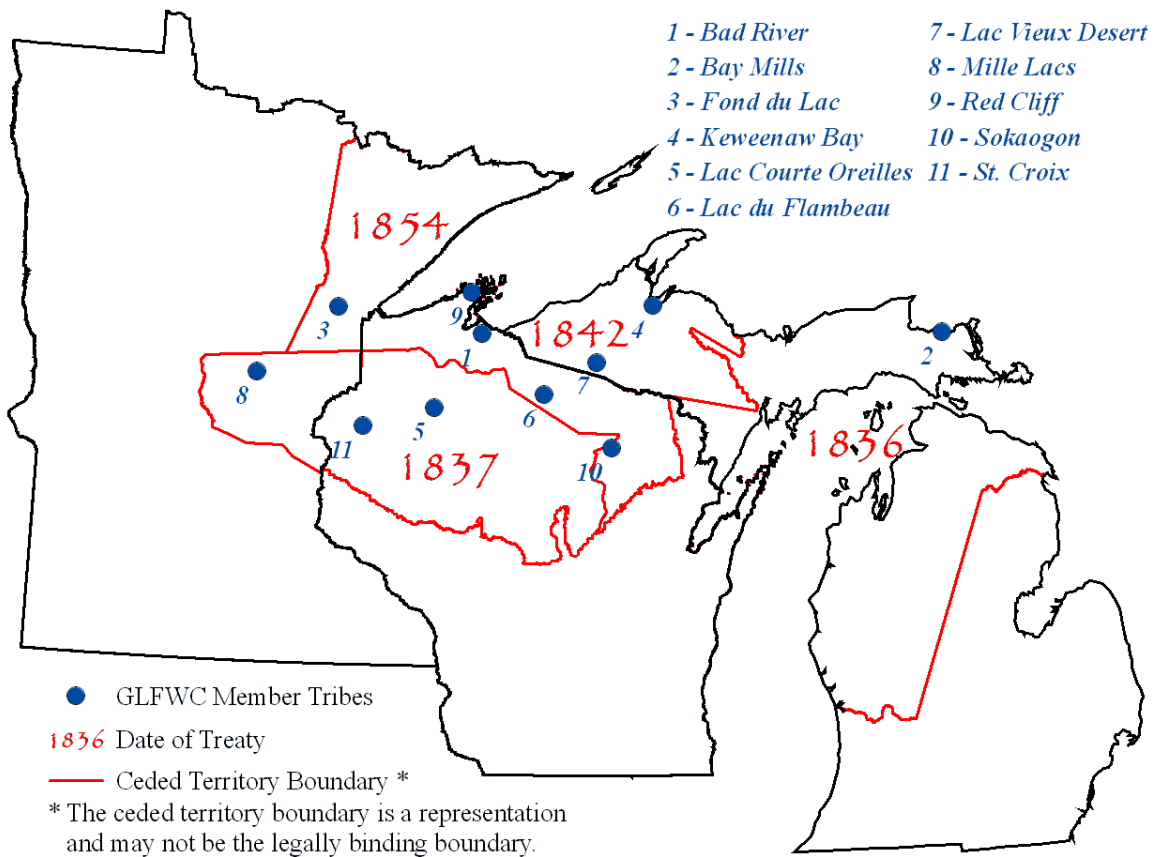


Figure 1. Ceded territory and location of GLIFWC-member tribes.

**DEER HUNTING**

**Methods**

*1836 Ceded Territory.* In 2011, 243 harvest permits were issued to BMIC tribal hunters. Hunters were initially issued two carcass tags each unless additional tags were requested in writing. Harvest information was collected (month and county of harvest, antlered or antlerless) from hunters who filled their first two tags before additional tags were issued. At the end of the season all hunters who had been issued tags were contacted and harvest information was collected by the BMIC Conservation Enforcement Department.

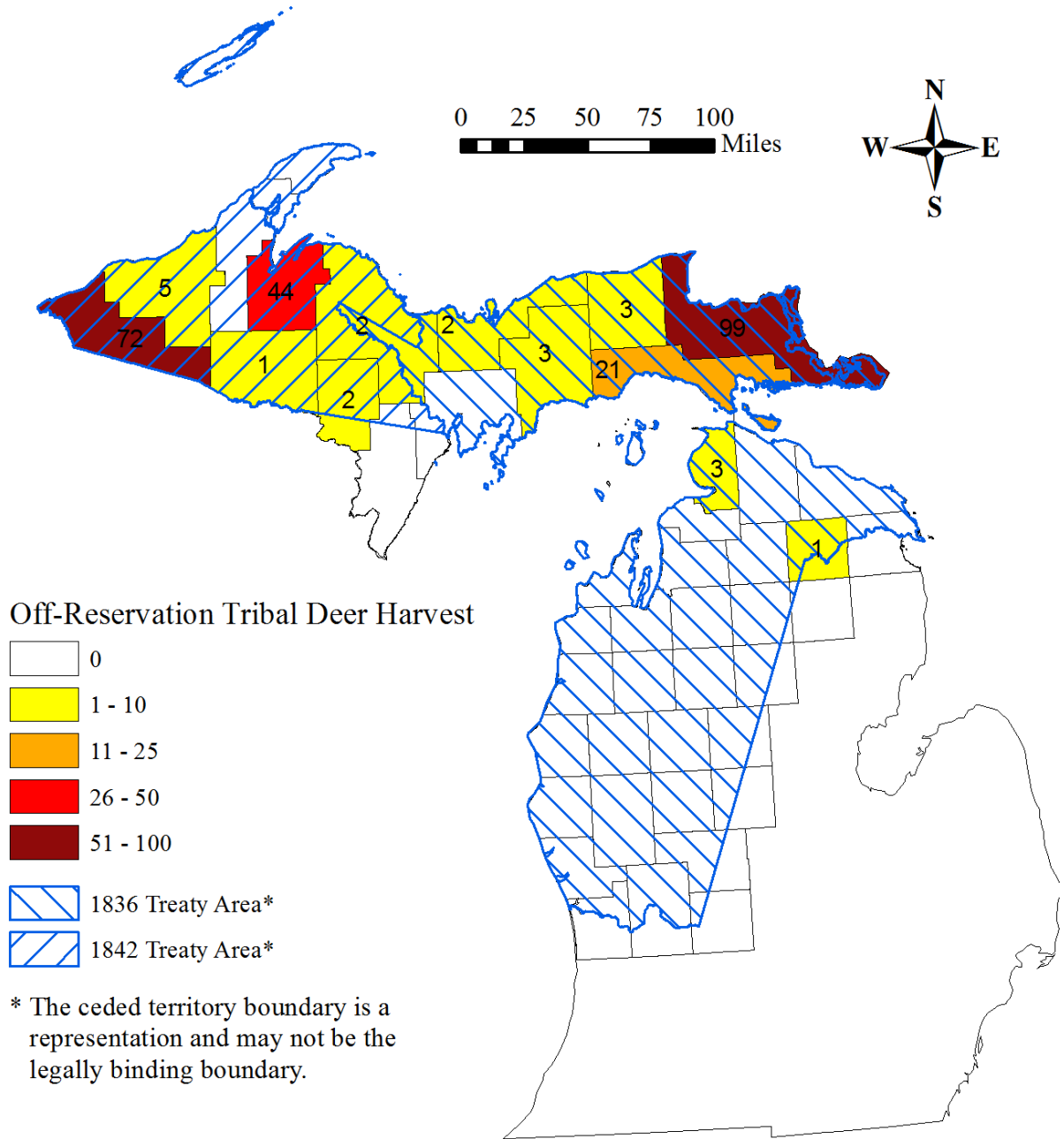
*1842 Ceded Territory.* Harvest data for the 1842 ceded territory in the UP were obtained from tribal registration stations where information was collected on each deer registered. Information included county and date of harvest, and type of deer (antlered or antlerless).

**Results**

The total off-reservation tribal deer harvest for GLIFWC-member tribes in Michigan was 258 deer (63% antlerless) (Table 1). A total of 124 deer (72% antlerless) were registered in the 1842 ceded territory in Michigan. Bay Mills tribal members harvested 134 deer (55% antlerless) in the 1836 ceded territory in Michigan. Figure 2 illustrates the distribution of deer harvested in the ceded territories of Michigan by county in 2011.

**Table 1.** Summary of 2011 off-reservation deer harvest in Michigan by GLIFWC-member tribes.

<b>Treaty Area of Harvest</b>	<b>Registration Station</b>	<b>Antlered</b>	<b>Antlerless</b>	<b>Unknown</b>	<b>Total</b>
1836	N/A	60	74	0	134
1842	Bad River	2	29	0	31
	Keweenaw Bay	20	24	0	44
	Lac Vieux Desert	11	13	0	24
	Red Cliff	0	20	1	21
	Sokaogon	1	1	0	2
	Warden Registration	0	2	0	2
<b>Total</b>		<b>94</b>	<b>163</b>	<b>1</b>	<b>258</b>



**Figure 2.** Distribution of off-reservation deer harvest in Michigan counties by GLIFWC-member tribes, 2011.

**ELK HUNTING**

**Methods**

*1836 Ceded Territory.* The Bay Mills Indian Community issued four elk permits to tribal hunters (one cow tag and three hunter's choice). All animals were checked in at Michigan DNR check stations for disease testing and a tooth was taken for aging.

**Results**

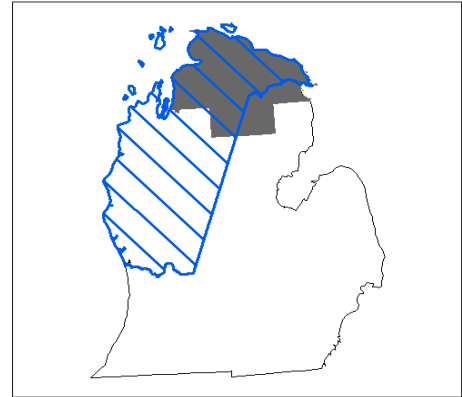
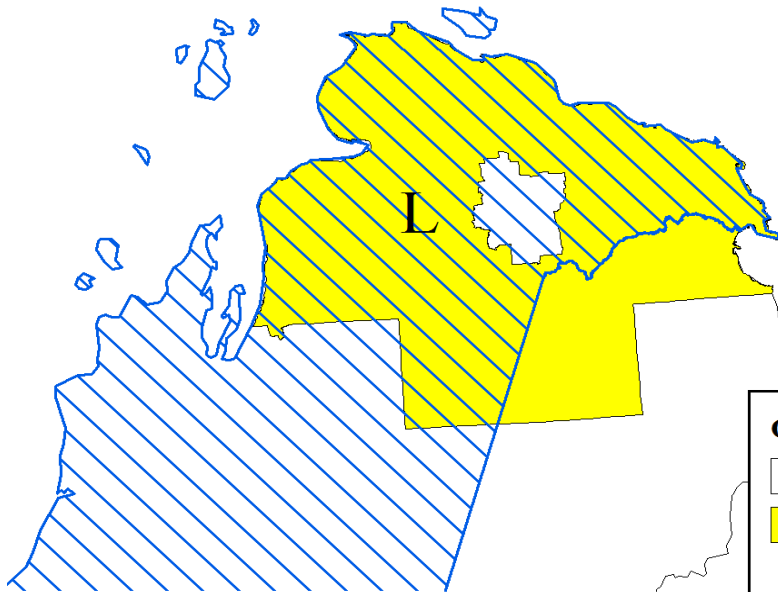
A total of four elk were harvested off-reservation in the 1836 ceded territory of Michigan by members of the Bay Mills Indian Community during the 2011 elk season (Table 2). Figure 3 illustrates the distribution of elk harvested in the 1836 ceded territory of Michigan in 2011.

**Table 2.** Summary of 2011 off-reservation elk harvest in Michigan by BMIC members.

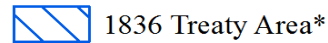
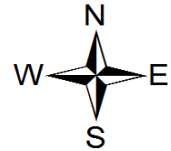
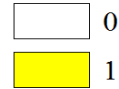
<b>Season</b>	<b>Unit</b>	<b>Cow</b>	<b>Bull</b>	<b>Total</b>
Early: 8/30-9/2; 9/23-9/26	L	0	1	1
Late: 12/3-12/11	A	1	0	1
	B	0	1	1
Tribal: 12/12-12/27	F	0	1	1
<b>Total</b>		1	3	4

### 2011 Elk Management Units

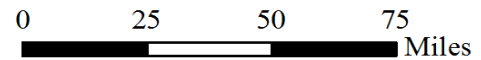
Early Season:



#### Off-Reservation Tribal Elk Harvest



\* The ceded territory boundary is a representation and may not be the legally binding boundary.



Late and Tribal Seasons:

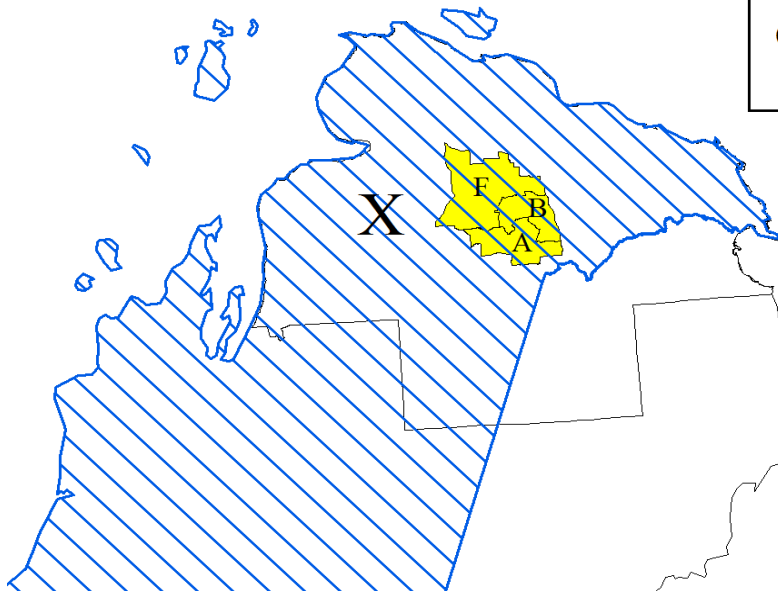


Figure 3. Distribution of off-reservation elk harvest by BMIC members in 2011.

## **BEAR HUNTING**

### **Methods**

*1836 Ceded Territory.* Because participation in the bear hunt is limited among Bay Mills Indian Community members, a targeted survey of the active bear hunters was conducted by the BMIC Conservation Enforcement Department to determine the level of harvest.

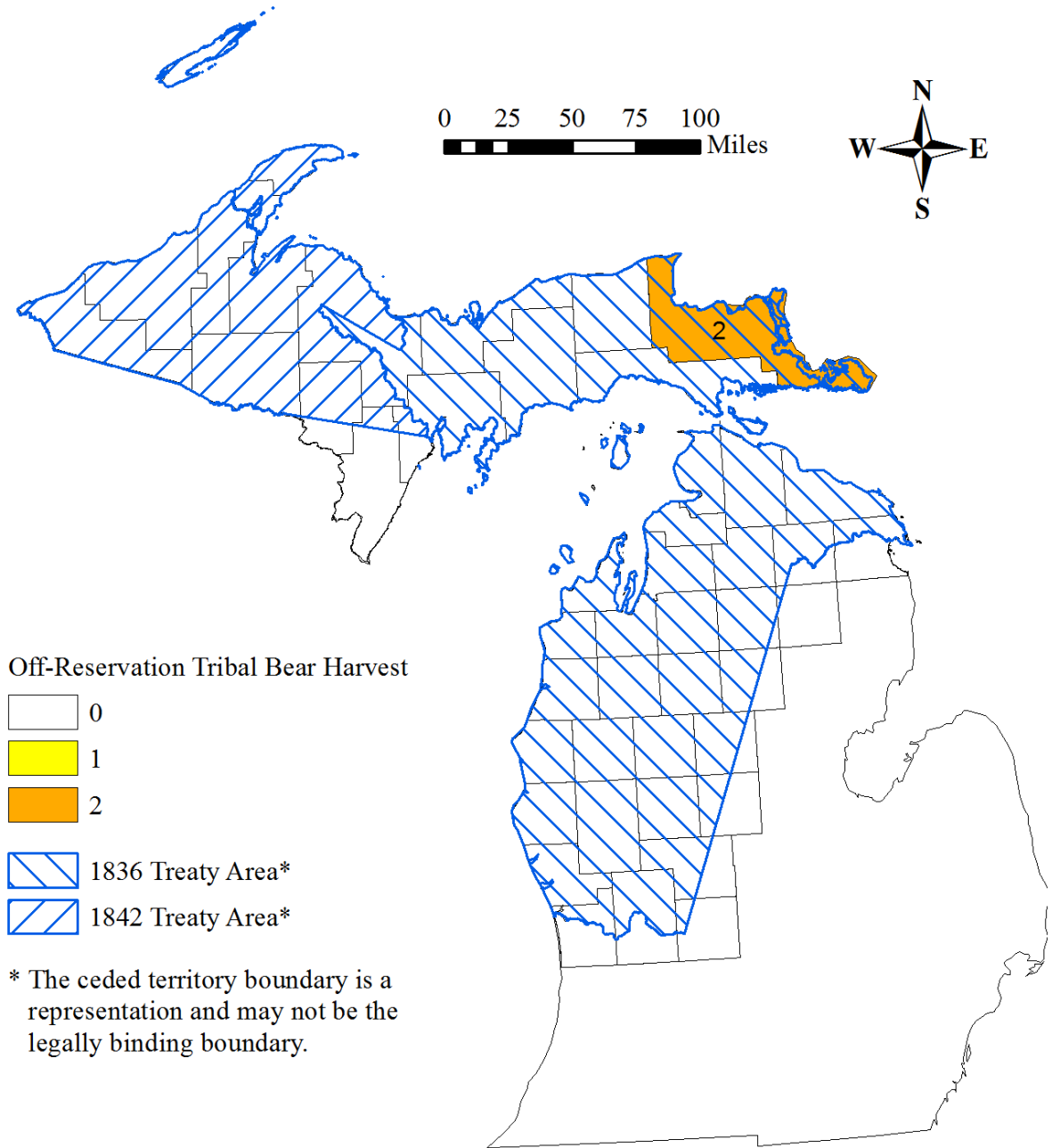
*1842 Ceded Territory.* Harvest data for the 1842 portion of the UP were obtained from tribal registration stations where information was collected on each bear registered. Information included sex, county, and date of harvest.

### **Results**

A total of two bear were harvested off-reservation in Michigan by GLIFWC-member tribes during 2011 (Table 3). None were harvested in the 1842 ceded territory and two were harvested in the 1836 ceded territory. Figure 4 illustrates the distribution of bear harvested in the ceded territories of Michigan by county in 2011.

**Table 3.** Summary of 2011 off-reservation tribal bear harvest in Michigan.

<b>Treaty Area of Harvest</b>	<b>Boar</b>	<b>Sow</b>	<b>Total</b>
1836	1	1	2
1842	0	0	0
Total	1	1	2



**Figure 4.** Distribution of off-reservation bear harvest in Michigan counties by GLIFWC-member tribes, 2011.