



# **Tribal Management Units in the 1837 and 1842 Ceded Territories**

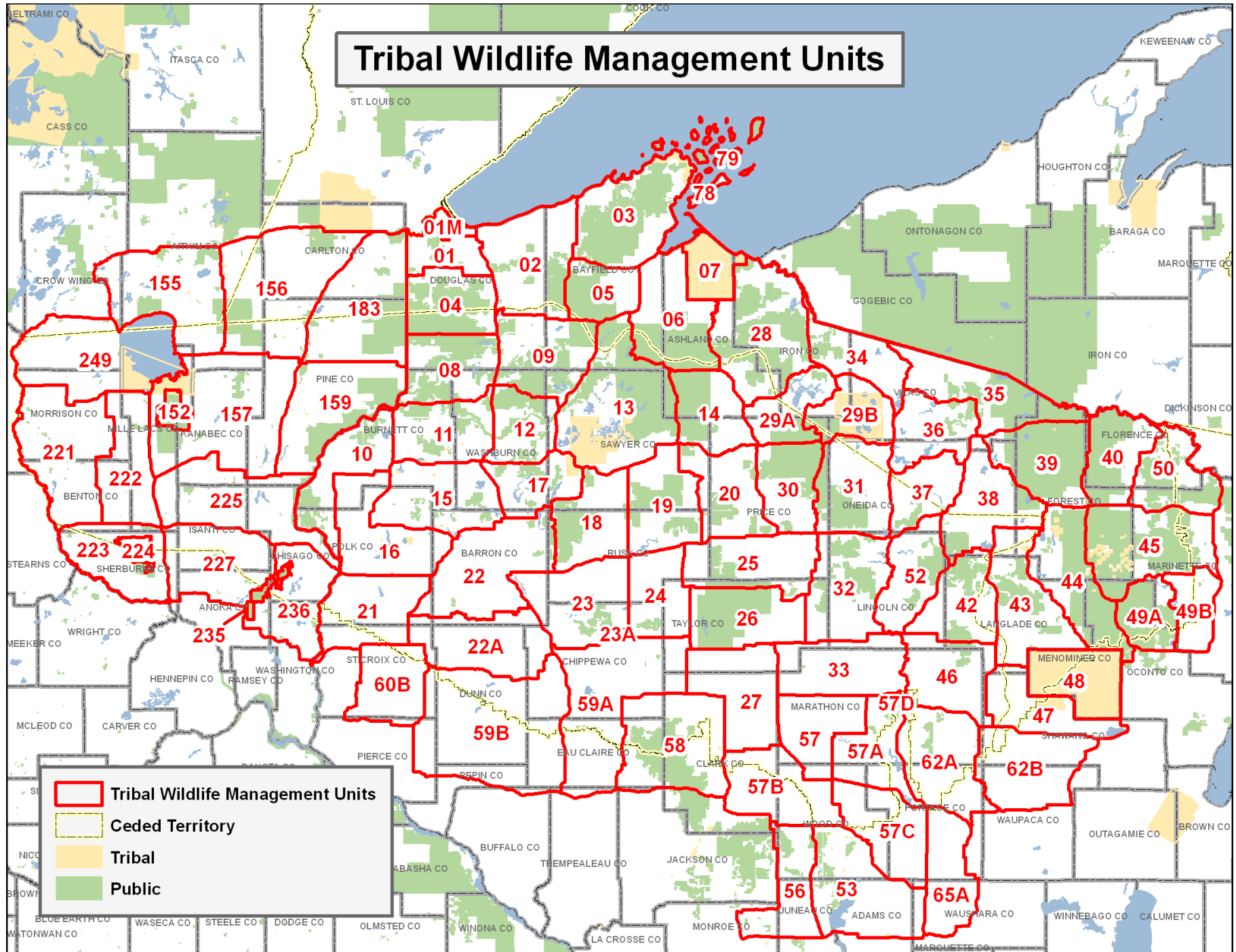
**Great Lakes Indian Fish & Wildlife Commission**

P.O. Box 9  
Odanah, WI 54861  
(715) 682-6619

[glifwc.org/regulations](http://glifwc.org/regulations)  
[maps.glifwc.org](http://maps.glifwc.org)

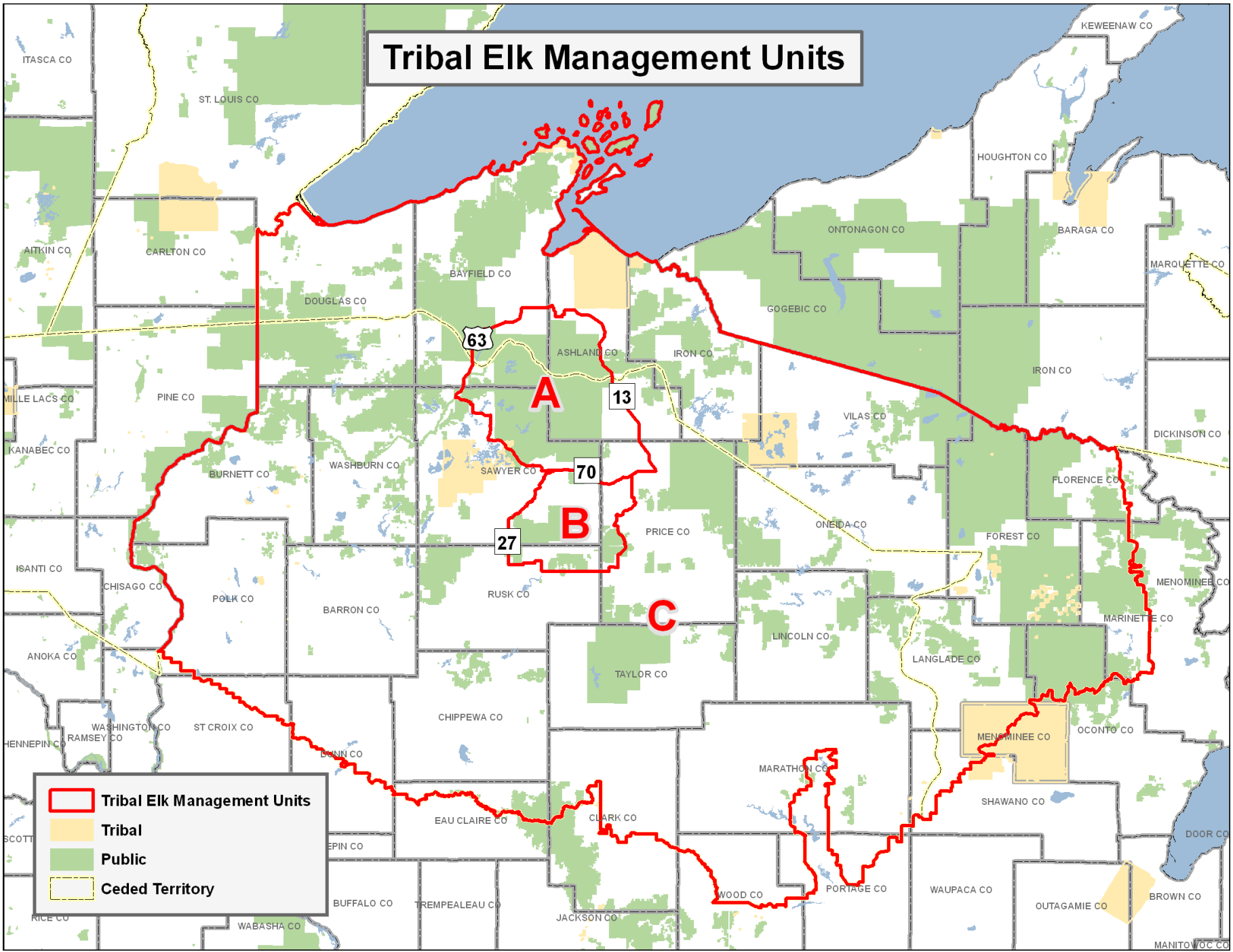
August 2018

# Tribal Wildlife Management Units



- Tribal Wildlife Management Units
- Ceded Territory
- Tribal
- Public

# Tribal Elk Management Units



**Legend**

- Tribal Elk Management Units
- Tribal
- Public
- Ceded Territory